

## *Euro XVI wildland fire shirt*

DATA  
SHEETQR: Use your camera or bar  
code scanner and download  
the digital PDF version

### DESIGN AND MATERIALS

- | Fire-proof Wildland Fire Shirt made with inherently fire-proof fabric.
- | It does not have treatments that are lost with washing. It has technical and design features that improve the user's comfort by increasing physical performance during the day.
- | This garment is designed to allow full mobility and rapid evaporation of perspiration, achieving low thermal stress by releasing body heat, thus minimizing risk in fire extinction tasks.
- | All of its materials are fire-proof, from the fabric to the threads, the reflective tape, the Velcro fastenings, and the hidden closings that prevent heat transfer from the outside to the inside of the garment, avoiding contact burns.

### QUALITY

- | Our fire-proof EURO XVI shirts and pants are manufactured according to the Certificate issued by the AITEX Certification Body of Spain.

This certificate obtained by our company guarantees the quality and performance of our fire-proof EURO XVI Wildland Fire Pants and Shirts under the ISO Standard 16073-3: 2019 "Personal Protection Equipment to Combat Wildfires," and the ISO Standard UNE-EN 15384: 2020 "Protective clothing for wildfire firefighters."



### PERSONALIZATION

- | Thermo transferred printing on the back and front, and embroidered flags or logos on the arms to provide uniformity to the work team.

# Euro XVI Wildland fire shirt

## DETALLES

## POCKETS

- | Napoleon-style pockets.

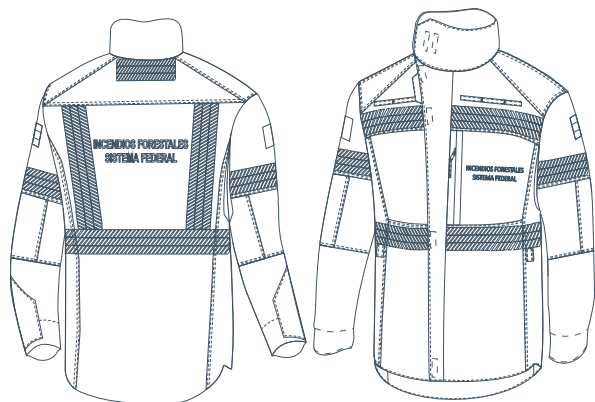


## DETAILS

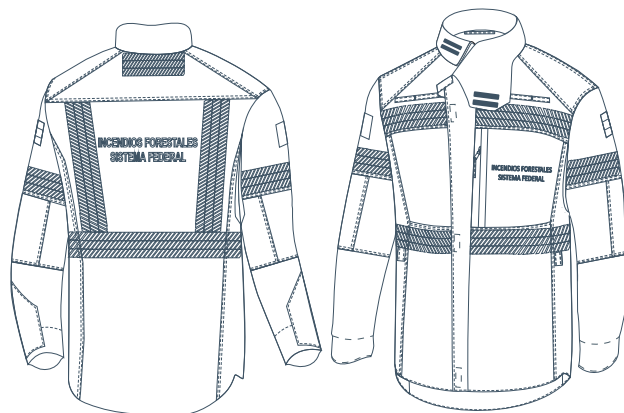
- | The collar can be raised and fastened during fire extinction tasks in order to protect the user's neck.
- | Straps for fastening elements on the chest.
- | The front zipper can be quickly released if needed. It is also protected by a placket to prevent heat from entering.
- | 100 % meta-aramid fire-proof reflective tape. It allows a 360° vision. Better visibility during day and night.
- | Straps to hang gloves on the waistband.
- | The cuff extends over the hand for added protection. Cuff adjustment with Velcro.
- | The back is longer, which forms a penguin-type tail to protect the body in different types of movements during work.



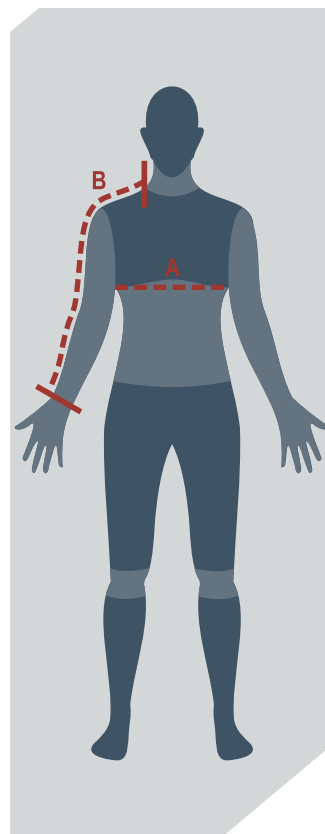
# Sizes chart Euro XVI wildland fire shirt



Option  
raised or closed collar



Option  
folded or open collar



- Measurement A is the perimeter of the torso by placing the tape right below the armpit with the arms down, and in an upright body position. Take the measurement with a shirt on.
- Measurement B is taken in the same body position as in A, placing the tape from the base of the neck up to the wrist, going over the shoulder and the elbow.
- Sizes not shown in the table are considered special, so they may differ in cost and delivery time.

The chart shows the measures of the body, not the ones of the garment

	measure/size	XS (36)	S (38/40)	M (42/44)	L (46/48)	XL (50/52)	XXL (54/56)	XXXL (58/60)
RECOMMENDED BODY SIZES	A-Chest	Less than 84cm	Between 85/92cm	Between 93/100cm	Between 101/108cm	Between 109/116cm	Between 117/124cm	Between 125/132cm
	B-Sleeve Length	Less than 53cm	Less than 55cm	Less than 57cm	Less than 61cm	Less than 65cm	Less than 69cm	Less than 71cm
SHIRT SIZES	Chest circumference	104cm	112cm	120cm	128cm	136cm	144cm	152cm
	Sleeve Length	58cm	60cm	62cm	66cm	70cm	74cm	76cm